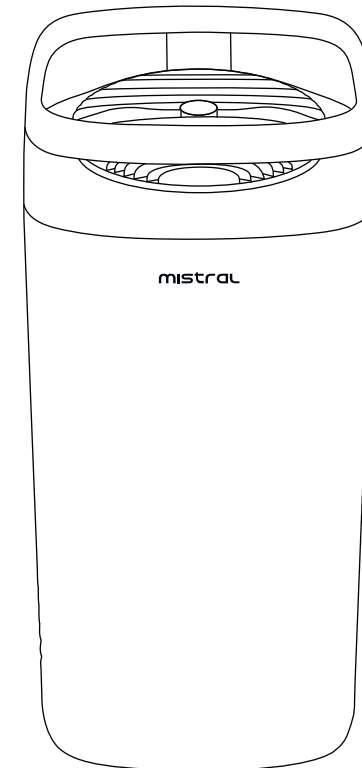


mistral

Air Purifier MAP500G



Please read this instruction manual thoroughly before operating and keep it for future reference

Warranty & Customer Service

SCAN FOR



e-Warranty

e-Warranty Registration at www.khind.com.my/e-warranty.html

MAYER MALAYSIA SDN BHD

Customer Service Hotline: 1800-88-0032

Service Centre Operating Hours:

8.30am – 6.00pm (Monday - Friday)

Closed on Saturday, Sunday and Public Holidays

No. 2, Jalan Astaka U8/82, Bukit Jelutong, 40150 Shah Alam, Selangor D.E., Malaysia.

Waranti & Perkhidmatan Pelanggan

IMBAS UNTUK



E-Waranti

Pendaftaran e-Waranti di www.khind.com.my/e-warranty.html

MAYER MALAYSIA SDN BHD

Hotline Perkhidmatan Pelanggan: 1800-88-0032

Waktu Operasi Pusat Perkhidmatan:

8.30am – 6.00pm (Isnin-Jumaat)

Ditutup pada hari Sabtu, Ahad dan Cuti Umum

No. 2, Jalan Astaka U8/82, Bukit Jelutong, 40150 Shah Alam, Selangor D.E., Malaysia.

IMPORTANT SAFETY INSTRUCTIONS

- This appliance is not intended for use by persons (including children) with reduced physical, sensory or mental capabilities, or lack of experience and knowledge unless they have been given supervision or instruction concerning the use of the appliance by a person responsible for their safety.
- Children should be supervised to ensure that they do not play with the appliance.
- Do not operate any appliance with a damaged cord or plug or after the appliance malfunctions, or has been dropped or damaged in any manner. If the power cord is damaged, it must be replaced by the manufacturer, its service agent, or similarly qualified persons to avoid a hazard.
- When using electrical appliances, basic safety precautions should always be followed to reduce the risk of fire, electric shock, and/or injury.
- Do not immerse appliance, cord or plug in water or other liquid.
- Unplug from the outlet when not in use and before cleaning.
- Do not unplug the appliance by pulling on the cord.
- Use the accessories from the appliance only, as other accessories not from the appliance may cause fire, electric shock or injury.
- Do not use this appliance in wet or high temperature environment (like bathroom, toilet and kitchen).
- Before replacing the filter, please stop this appliance and cut off power.
- Do not place any items on top of the appliance, and do not stand or sit on the appliance.
- Please use the original filter provided by the factory. In case of other filters, the best results cannot be achieved.
- Do not insert the fingers or objects into the air inlets or air outlets to prevent the appliance from physical damages or malfunction.
- If there is abnormal sound, burning smell, and or smoke, immediately unplug the appliance and contact the manufacturer, service agent, or similarly qualified persons.
- Do not spray flammable substances near the appliance; Do not spray water directly on the appliance or use chemical cleaners like alcohol or hydrochloric acid, etc.; Do not place water containers, medicines, or flammable materials on the appliance.
- Do not block the air inlets/ outlets of the appliance with any item.
- This appliance cannot replace natural ventilation and other appliances like the vacuum cleaner, kitchen ventilator, etc.
- Be sure to place the appliance on a flat, dry, and stable surface with 30cm space around it before switching on the appliance.

CLEANING AND MAINTENANCE

Note:

- Be sure to turn it off before any maintenance, and cut off power.

Cleaning:

- Open the air inlet grill, vacuum up dust with a vacuum cleaner, and wipe it with a cloth.
- When the last bar of the progress bar turns red and the cleaning indicator light is on, it prompts that the pre-filter needs to be cleaned.
- Unplug the power cord, and take out the pre-filter.
- Vacuum up dust with a vacuum cleaner or wipe it with a cloth.
- If there is a lot of dirt, the common diluted kitchen detergent is used to soak, and then clean it.
- Dry the pre-filter, assemble the pre-filter and plug the power cord to start up.
- Long press the PM2.5 detection button for 3s, the cleaning indicator light is off, and the pre-filter is restored.
- When the last bar of the progress bar turns red and the replacement indicator light is on, it prompts that the HEPA filter needs to be replaced.
- Take out the HEPA filter, remove the protective film of the filter and assemble the HEPA filter.
- Long press the PM2.5 detection button for 3s, the cleaning indicator light is off, and the pre-filter is restored.

TROUBLESHOOTING

Problem	Solutions
E1	Disassembly protection tips; please assemble the air inlet grills and air outlet grills properly.
E0	Hardware faults; please contact the Service Centre
Eu	Sensor faults; please contact the Service Centre
E3	The speed is beyond control; please contact the Service Centre.
The purifier is not working	Check whether the power cord is plugged into the power socket; the loose plug caused by the movement of the purifier may affect the energizing or check whether the air inlet grill and air outlet grill of the purifier are assembled properly. This appliance is provided with a disassembly protection function. If the air inlet grill and air outlet grill are not assembled properly, the appliance can't work.

Pre-heating:

- The VOC sensor is preheated, Excellent; Medium and Poor are displayed alternately, and then displayed normally after 1 min.
- The particle sensor enters the preheating state, PM2.5 displays "- - -"; Medium and Poor are displayed alternately, and then displayed normally after 10s.
- The purifier is powered on for the first time and then enters the Auto mode.

Mode:

- Press the "Ⓜ" button to switch auto mode, sleep mode and turbo mode (optional).

Childlock:

- Long press the mode button and speed button for 3s simultaneously, and it is available in case of power-on state or standby state (power-off state with electricity).

Speed:

- Press the "⚙️" button to switch between the low, medium, and high speeds.

Detection:

- Press the "☀️" button in case of standby state (power-off state with electricity), and then PM2.5, VOC quality indicator lights are on in order.
- Long press the HEPA filter for 3s.

Brightness:

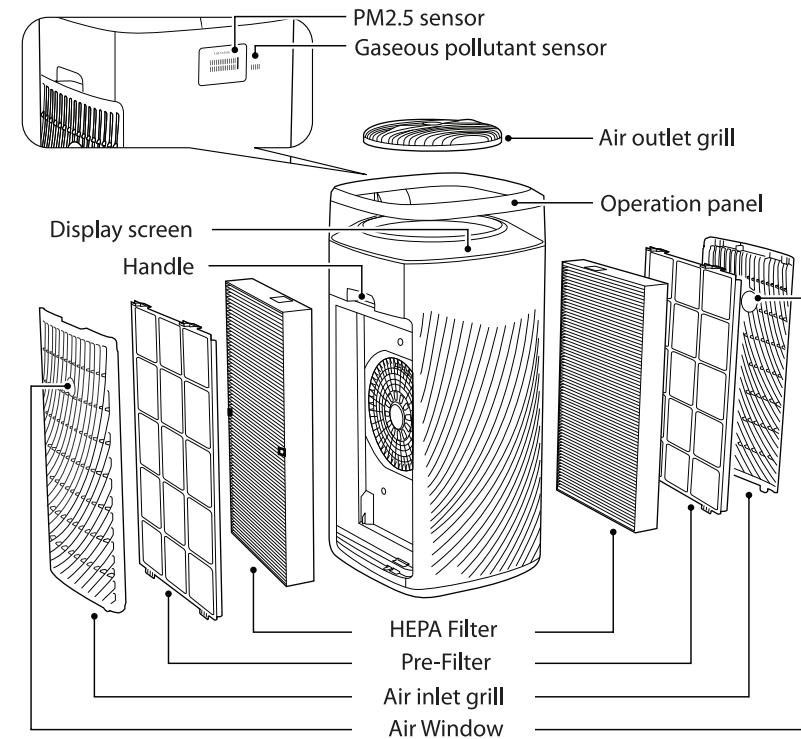
- Press the "💡" button for optional display screen bright, dim and dark.

- Do not put it in a place with direct sunlight.
- To prevent electromagnetic disturbance, the appliance must keep a certain distance from the TV, radio, microwave oven and others.
- The mist produced by the ultrasonic humidifier may affect the PM2.5 detection of this appliance, and both should maintain a certain distance.
- Do not disassemble or modify this appliance to avoid accidents.
- Do not pull the power cord to move the appliance.
- Please take care of the children and make sure that the children do not touch the appliance to avoid accidents.

PRODUCT TECHNICAL PARAMETERS

MODEL	RATED VOLTAGE	RATED POWER	CADR	AREA
MAP500G	220-240V~50Hz	35W	500 m ³ /hr	40-60 m ²

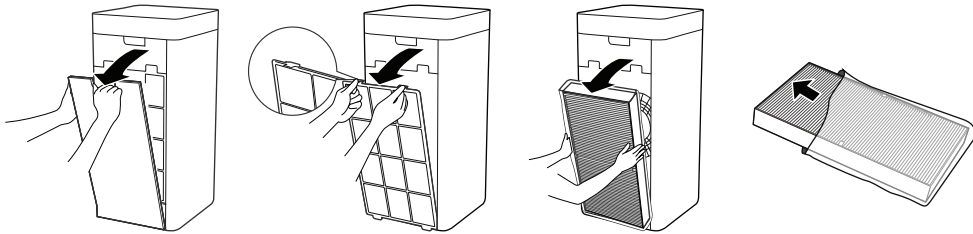
INTRODUCTION OF PARTS



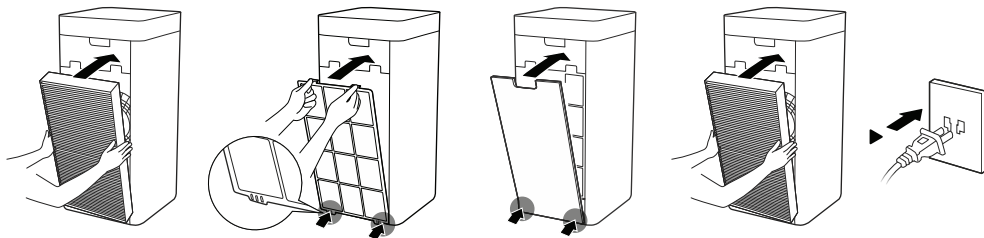
CONTROLS AND OPERATIONS

Installing:

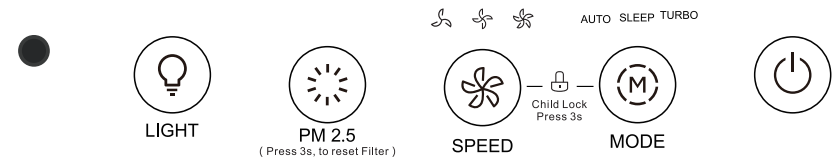
- Take down the air inlet grill.
- Take out the pre-filter press the u-shaped buckle to pull outward, and take out the pre-filter.
- Take out the HEPA filter hold both sides of the HEPA filter with both hands, and take out the HEPA filter.
- Remove the protective film of the filter.



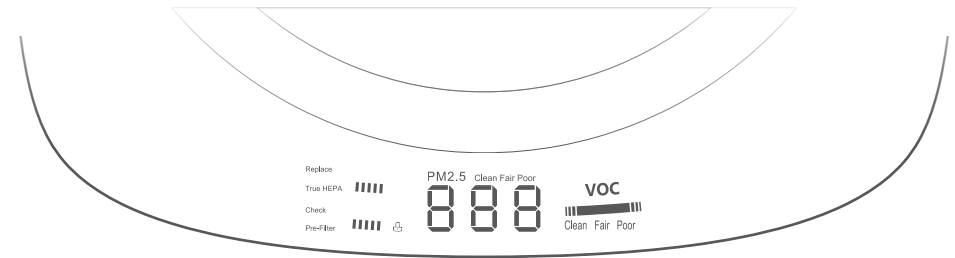
- Assemble the HEPA filter.
- Assemble the early pre-filter align the slot position at the bottom, and buckle up the upper u-shaped buckle.
- Assemble the air inlet grill align the slot position at the bottom, press both sides of the upper part of the air inlet grill, and buckle up the air inlet grill.
- Assemble the filter on the other side repeat the steps to assemble the filter on the other side, and then power on for operation.



Control panel



Display panel



Note:

- This appliance is provided with a disassembly protection function; the appliance can only operate normally after the air inlet grill and air outlet grill are assembled properly.
- In case of continuous electricity, enter the working mode before the standby state, after each power on.
- The appliance is connected to the power again after unexpected power outage (when the power is off or the power cord is unplugged during normal operation), and then restores to the working state before the power outage.

On/Standby:

- Power on for the first time, the display panel flashes for 1s, and then the screen is turned off.
- Press the On/Standby Button, "⏻", to switch on the appliance.