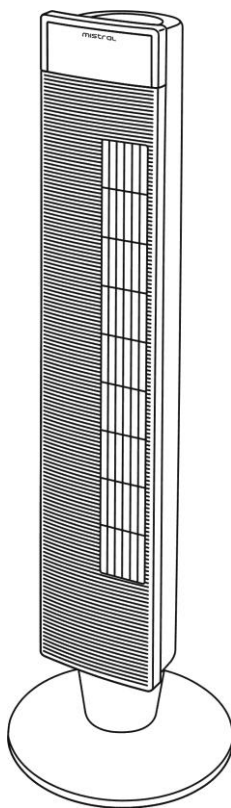


mistral

Instruction Manual TOWER FAN MFD640R



Please read this instruction manual carefully before operating this product.
Keep this manual handy for future reference.

GENERAL SAFETY PRECAUTIONS

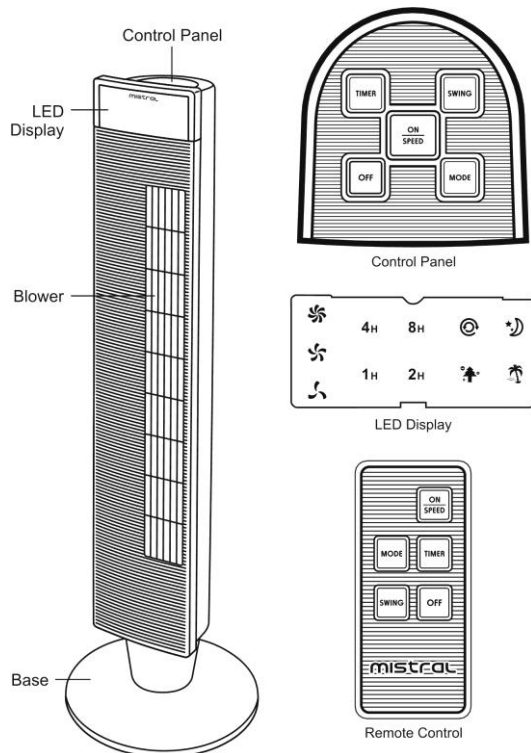
1. This appliance is intended for indoor and household use only; not for outdoor, commercial and industrial use.
2. To protect against fire, electric shock and injury, do not immerse power cord, plug or appliance in water or other types of liquid.
3. Use only original accessories supplied.
4. Educate children about the danger and safety rules associated with operating electrical equipment.
5. Ensure the voltage indicated on the Rating Label corresponds to the local power supply.
6. Always unplug the appliance from the wall socket when it is not in use.
7. Do not unplug the appliance from the wall socket with wet hands.
8. Do not pull the power cord to remove the plug from the wall socket.
9. Do not coil the power cord too tightly around the tower fan, to prevent damage to the power cord and appliance.
10. Do not let the power cord hang over the edge of the table or touches any hot surface.
11. Ensure that the appliance is fully assembled before plugging it into the wall socket.
12. Do not cover the air inlet or outlet of the appliance as this may cause damage to the motor.
13. Do not insert or allow objects to enter any ventilation or exhaust opening as this may damage the product and could cause an electric shock or fire.
14. Do not leave the appliance operating unattended for any extended period of time.
15. If the supply cord is damaged, it must be replaced by the manufacturer, its service agent or similarly qualified persons in order to avoid a hazard.

16. This appliance is not intended for use by persons (including children) with reduced physical, sensory or mental capabilities, or lack of experience and knowledge, unless they have been given supervision or instruction concerning the use of the appliance by a person responsible for their safety. Children should be supervised to ensure that they do not play with the appliance.

SPECIFICATIONS

Model	MFD640R
Rated Voltage	220-240V
Rated Power	50Hz
Frequency	65W

PARTS IDENTIFICATION



Before Using

- Please read the instruction carefully before use and keep them for future reference.
- Check your local main voltage whether it is the same as stated on the appliance.
- Before using for the first time, remove any protective films or stickers from the tower fan.
- Ensure the power switch is at “OFF” position, when inserting the plug.

Installation Instruction

Insert the bottom of stand pole into the center hole of the base. And lock them with the plastic nut. Please check these steps as the installation guide picture as bellow.

Note: the plastic nut must be locked tightly to avoid any shaking.

Operation of Remote Tower Fan

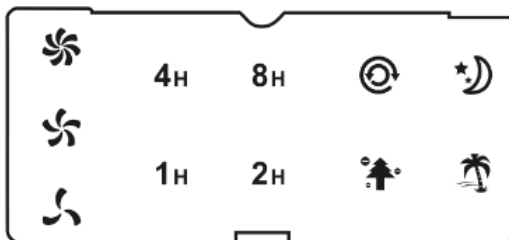
A. Battery Installation

One button CR2032 3V battery has been used in our remote control. Please insert the battery to remote control tightly based on the direction of the polarity. If it does not use for a long time, please pull the battery out from the remote control.

B. Remote control

The function of the buttons on the remote control work exactly the same as the buttons on the main body.

C. Control panel Display



1. ON/SPEED

Press the ON/SPEED button to turn on the unit. Press the button again to adjust the speed. The sequences are Low→Mid→High→Low→Mid in repetition.

2. TIMER

To set timer of the tower fan, press the TIMER button and the display will indicate "0". Press the button again to set 1h→2h→4h→8h of timer. If the remaining time is "0", the unit will be in standby mode.

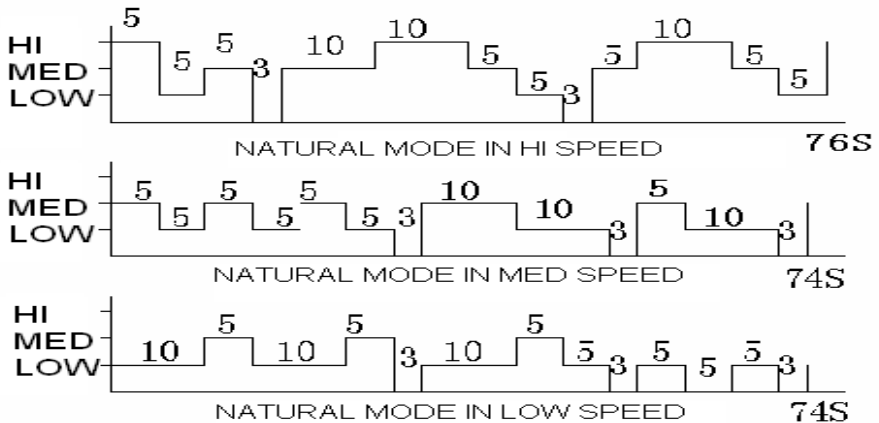
3. MODE

Press the MODE button, it will change the mode from Normal→Nature→Sleeping→Normal in repetition. The LED indicator will show the mode type accordingly.

NORMAL: the unit will run by default setting and with constant speed.

NATURAL

The motor will work in the mode of high-mid-low, and repeat in such sequence automatically.



SLEEPING

Press the MODE button until the LED corresponds to the SLEEPING mode glows. Under this mode, the fan speed switches ON and OFF at a set speed, thus saving energy during night time.

If the fan speed is set to “High”, the fan will operate for half an hour in each fan speed setting. The cycle will continue until the preset time is reached or the unit is turned off.

If the fan speed is set to “Medium”, the unit will operate for 0.5hr in medium mode and then switch to “Low” setting and will operate for 0.5hr. After 0.5hr, the unit will switch back to “Medium” and the cycle continues until the preset time is reached or the unit is turned off.

If the fan is set to a low speed setting, the fan will continue to operate in low setting until the preset time is reached or the unit is turned off.

IONIZER

To activate the ionizer function, press the IONIZER button once and the fan will operate with ionizer function. Press this button again to switch the function OFF.

4. SWING

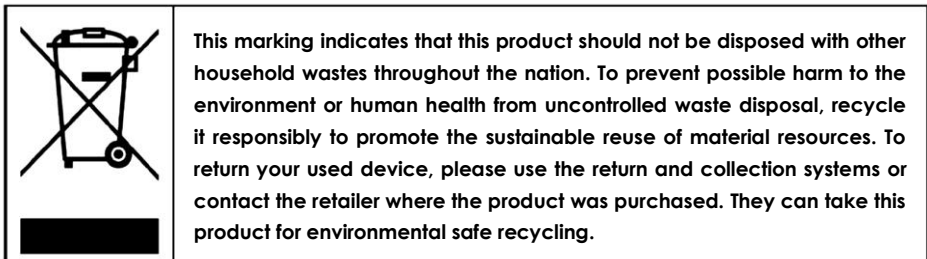
Press SWING button once, the fan will swing horizontally with the relative control light on. Press twice, the fan will stop swinging.

5. OFF

Press OFF to turn the device off and the fan will stop working.

Cleaning and Maintenance

- Always unplug the product from the wall socket and let it cool down completely prior to cleaning.
- Do not use abrasive sponge, scouring pads or stiff brush to clean the appliance.
- Please be cautious when cleaning the product near to the motor housing area.
- Use only damp cloth to wipe the exterior of the unit. Do not immerse the main body in water.
- Do not allow the motor or other electrical components to be exposed to water.
- For proper storage, always place the appliance in a low humidity environment.



Warranty & Customer Service | Waranti & Khidmat Pelanggan

SCAN FOR



e-Warranty

**e-Warranty Registration at <https://khindonline.com/login>
Pendaftaran e-waranti di <https://khindonline.com/login>**

MAYER MALAYSIA SDN. BHD. (No. 200801009804)

Customer Service Hotline: 1800-88-0032

Service Centre Operating Hours:

8.30am – 6.00pm (Monday - Friday)

Closed on Saturday, Sunday and Public Holidays

No. 2, Jalan Astaka U8/82, Bukit Jelutong, 40150 Shah Alam, Selangor D.E., Malaysia.