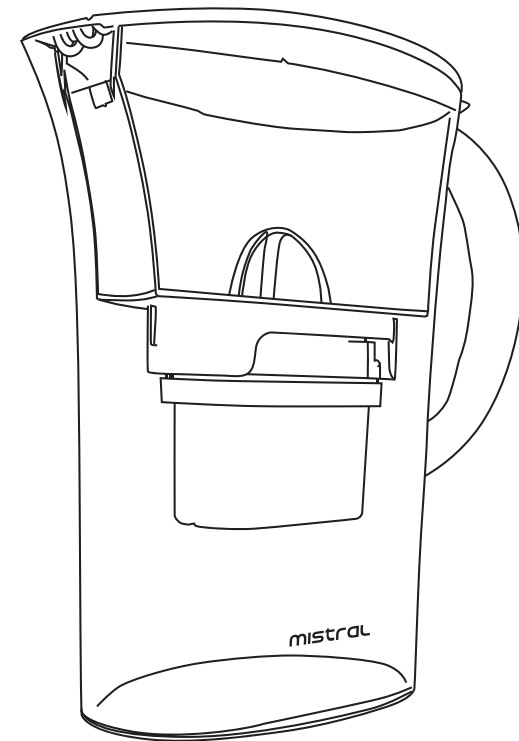


mistral

Filter Jug MFK621



Warranty & Customer Service

SCAN FOR



e-Warranty

e-Warranty Registration at <https://khindonline.com/login>

MAYER MALAYSIA SDN BHD

(Formerly known as Khind Alliances Sdn. Bhd.)

Customer Service Hotline: 1800-88-0032

Service Centre Operating Hours:

8.30am – 6.00pm (Monday - Friday)

Closed on Saturday, Sunday and Public Holidays

No. 2, Jalan Astaka U8/82, Bukit Jelutong, 40150 Shah Alam, Selangor D.E., Malaysia.

Waranti & Perkhidmatan Pelanggan

IMBAS UNTUK



E-Waranti

Pendaftaran e-Waranti di <https://khindonline.com/login>

MAYER MALAYSIA SDN BHD

(Sebelum ini dikenali sebagai Khind Alliances Sdn. Bhd)

Hotline Perkhidmatan Pelanggan: 1800-88-0032

Waktu Operasi Pusat Perkhidmatan:

8.30am – 6.00pm (Isnin-Jumaat)

Ditutup pada hari Sabtu, Ahad dan Cuti Umum

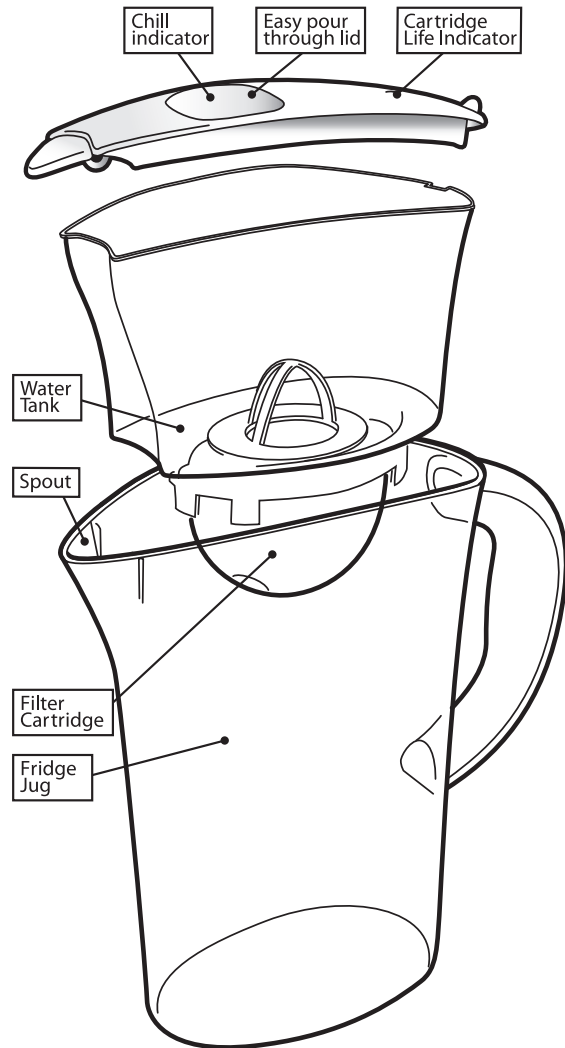
No. 2, Jalan Astaka U8/82, Bukit Jelutong, 40150 Shah Alam, Selangor D.E., Malaysia.

Please read this instruction manual thoroughly before operating and keep it for future reference

IMPORTANT SAFETY INSTRUCTIONS

- Only filter cold water.
- Consume filtered water within one to two days.
- We recommend boiling water for use in the preparation of baby food.
- Don't use the filter jug for any purpose other than filtering water.

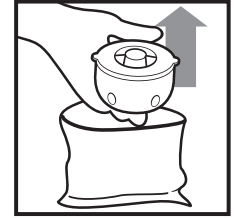
INTRODUCTION OF PARTS



CONTROLS AND OPERATIONS

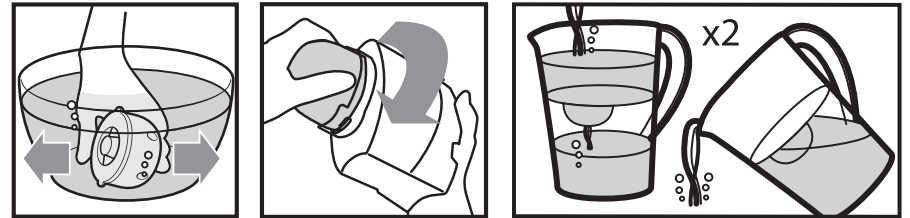
Before using the filter jug for the first time:

1. Remove all packaging from the filter jug.
2. Remove the jug lid and take the water tank out.
3. Take the filter cartridge out and remove any packaging.
4. Fill the filter jug with cold water and rinse.



Preparing the water filter cartridge:

- Prepare your Aqua Optima filter cartridge by carefully following all of the instructions on the packaging. Remove the Aqua Optima cartridge from all packaging. There may be a small residue of black particles (carbon) in the bag or adhering to the cartridge body, this is normal. These particles are harmless and are washed off during the preparation process.
- Shake the Aqua Optima cartridge in cold water to ensure that any trapped air bubbles are removed. Some loose carbon particles may be released during this process. This is normal and does not influence performance. Your Aqua Optima filter cartridge is now ready for use.



Fitting the filter into the water tank:

1. Remove the jug lid and lift the water tank out of the fridge jug.
2. Place the Aqua Optima cartridge into the base of the water tank.
3. Push the Aqua Optima cartridge towards the water tank and turn it clockwise to lock in place.
4. Ensure the Aqua Optima cartridge is firmly secured.
5. Lower the water tank until it sits inside the jug.
6. Replace the lid.

Important:

- Fill the upper vessel with cold water and allow the water to pass through the cartridge.
- Discard this water and repeat this process once more.

Your fridge jug is now ready for use.

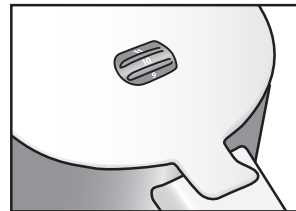
CLEANING AND MAINTENANCE

Changing the water filter cartridge:

1. Remove the jug lid.
2. Lift the water tank out of the jug.
3. Hold the water tank and turn the water filter anti-clockwise to release it from the water tank.
4. Discard the water filter.
5. Prepare and insert the new Aqua Optima cartridge for use as described opposite.

Filter cartridge life indicator:

- The cartridge life indicator dial can be found on the lid.
- This is to remind you when to change your Aqua Optima filter cartridge.



Aqua Optima 30-day Standard filter cartridge:

To ensure the best performance of your Aqua Optima Standard cartridge, it should be changed after 100 litres, which is approximately 4 weeks for a typical family in a hard water area.

To remind you to do this every month (4 weeks) follow this example:-

- You have fitted your new Aqua Optima filter and it is now April – month 4.
- Then set the reminder dial to May – month 5.
- By looking at the reminder you can tell you need to change the water filter in May.

Aqua Optima 60-day Double Life filter cartridge:

To ensure the best performance of your Aqua Optima Double Life cartridge, it should be changed after 200 litres, which is approximately 8 weeks for a typical family in a hard water area.

To remind you to do this every two months (8 weeks) follow this example:-

- You have fitted your new Aqua Optima filter and it is now April – month 4.
- Then set the reminder dial to June – month 6.
- By looking at the reminder you can tell you need to change the water filter in June.



Care of the System

- Water is a foodstuff. We recommend that any treated water is consumed or discarded within 2 days.
- In the event of the filter jug not being used for more than 48 hours, fill it twice with cold water, and discard the water before continuing use as normal.
- Should the system not be used for an extended period of time (for example, a holiday) we recommend that the filter is removed and placed in a clean plastic bag and stored in the fridge. This will help to maintain the filter when not in use.
- Before using the filter after storage, follow the preparation and fitting instructions for use as normal. The filter should be stored out of direct sunlight and away from heat sources.
- The water tank and jug lid should be washed regularly, at least every time the filter is replaced.

Cleaning

- Wipe inside and out with a damp cloth and clean the water filter and tank.
- Don't use any washing-up liquid or anything that may taint the water.
- Don't use harsh or abrasive cleaning agents or solvents.

Filter Holder Seal

- Care should be taken to ensure that the seal is fitted correctly otherwise un-filtered water may leak into the filter jug. If the seal becomes dislodged during cleaning or transportation it can be easily re-fitted on to the filter holder found on the underside of the water tank.



FREE

Filter Replacement
Reminder App

Scan to download. Available for

