

TROUBLESHOOTING

Problem	Reasons	Solutions
The appliance fails to steam. Indicating lamps do not illuminate.	Steamer is not plugged in.	Plug into electrical outlet.
	Household Circuit Breaker/ Ground Fault Interrupter is tripped or Fuse is blown.	Check the power outlet. If you need assistance, contact a qualified electrician.
The appliance fails to steam. Indicating lamps illuminate.	Mineral build-up in the appliance.	Follow the Removing Mineral Build-up.
	The Water Tank is empty.	Refill the water tank.
Excessive gurgling of Hose and Steam Nozzle.	Condensation in hose.	Some gurgling is a natural effect of the steam process.
		For excessive gurgling, extend the hose vertically to allow water to drain back into the Water Reservoir.
Steam is intermittent.	Mineral build-up in the appliance.	It's normal for the appliance to periodically stop steaming for a few seconds. If the steam stays off for longer periods, follow the removing mineral build-up procedure.

Warranty & Customer Service

SCAN FOR



e-Warranty

e-Warranty Registration at www.khind.com.my/e-warranty.html

MAYER MALAYSIA SDN BHD

Customer Service Hotline: 1800-88-0032

Service Centre Operating Hours:

8.30am – 6.00pm (Monday - Friday)

Closed on Saturday, Sunday and Public Holidays

No. 2, Jalan Astaka U8/82, Bukit Jelutong, 40150 Shah Alam, Selangor D.E., Malaysia.

Waranti & Perkhidmatan Pelanggan

IMBAS UNTUK



E-Waranti

Pendaftaran e-Waranti di www.khind.com.my/e-warranty.html

MAYER MALAYSIA SDN BHD

Hotline Perkhidmatan Pelanggan: 1800-88-0032

Waktu Operasi Pusat Perkhidmatan:

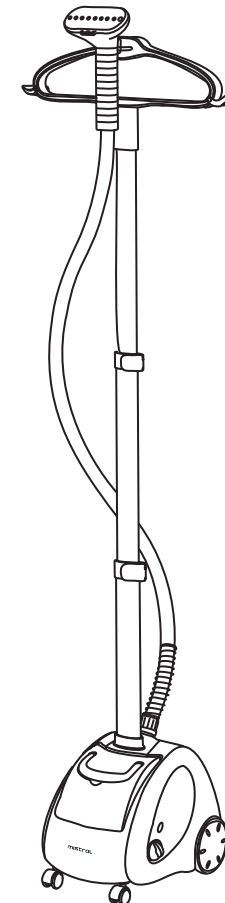
8.30am – 6.00pm (Isnin-Jumaat)

Ditutup pada hari Sabtu, Ahad dan Cuti Umum

No. 2, Jalan Astaka U8/82, Bukit Jelutong, 40150 Shah Alam, Selangor D.E., Malaysia.

mistral

Garment Steamer MGS29



Please read this instruction manual thoroughly before operating and keep it for future reference

IMPORTANT SAFETY INSTRUCTIONS

- This appliance is not intended for use by persons (including children) with reduced physical, sensory or mental capabilities, or lack of experience and knowledge unless they have been given supervision or instruction concerning the use of the appliance by a person responsible for their safety.
- Children should be supervised to ensure that they do not play with the appliance.
- Do not operate any appliance with a damaged cord or plug or after the appliance malfunctions, or has been dropped or damaged in any manner. If the power cord is damaged, it must be replaced by the manufacturer, its service agent, or similarly qualified persons to avoid a hazard.
- When using electrical appliances, basic safety precautions should always be followed to reduce the risk of fire, electric shock, and/or injury.
- Do not immerse appliance, cord or plug in water or other liquid.
- Unplug from the outlet when not in use and before cleaning.
- Do not unplug the appliance by pulling on the cord.
- Use the accessories from the appliance only, as other accessories not from the appliance may cause fire, electric shock or injury.
- Do not leave the steamer unattended while it is in operation.
- Do not operate the steamer without filling the water reservoir. Always check the water level before and during operation.
- Do not lay the hose on the ground or wind it.
- Do not touch the hot metal parts, hot water or steam to avoid burns.
- Allow the appliance to cool completely for at least 30 minutes and drain the water tank and water reservoir before storage.
- Move the appliance by grasping the telescopic pole. Do not force the casters if they are stuck. Turn off the appliance, drain the water tank and water reservoir before inspecting the casters.
- Always disconnect the appliance from the outlet before filling or draining water. Be careful to avoid excess water spilling from the water reservoir.
- Unplug the appliance from the outlet when not in use, when moving the appliance from one location to another and before cleaning.
- Do not place the appliance or any parts near an open flame, cooking or other heating appliance.
- To disconnect, grip the plug and pull it from the wall outlet. Never drag the cord.
- Do not use extension cords to avoid overheating and risk of fire.
- No detergent can be added into the water tank or it will cause damage. Distilled or de-mineralized water is recommended.
- Do not let people with intellectual disabilities to use this appliance.
- It shall not spray liquid or steam into the electrical components of the appliance during use.
- Care should be taken when using the appliance due to the emission of steam.

CLEANING AND MAINTENANCE

We recommend you follow this procedure at least once per week.

- Turn the Switch to "OFF".
- Unplug the appliance from the power outlet.
- Allow the steamer to cool for at least 30 minutes.
- Remove the hose and shorten the telescopic pole, then set them aside.
- Remove and drain the water tank. Rinse the water tank with fresh water, and drain completely. Place the water fill tank back on the water reservoir.
- Drain the steamer by removing the drain plug and emptying the contents.
- Flush the appliance by filling the water reservoir and the hose connector with fresh water and draining completely. Replace the drain plug.
- Wrap the hose around the telescopic pole one time. Place the steam nozzle on the steam nozzle holder.
- Store in a cool, dry place.

Removing mineral build-up:

One common problem with steamer is mineral build-up caused by a high mineral in many municipal water suppliers. Mineral residue inside of the internal pipes and heater can cause intermittent steaming or, in some cases, no steaming at all. According to the water quality in different regions, we advise you to remove the mineral build-up after using 7-15 days. Please take a reference of the following procedure.

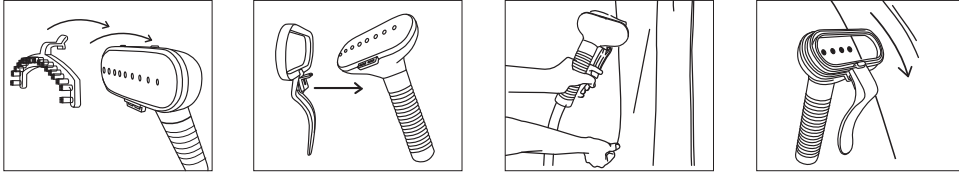
The procedure below can be used to reduce mineral build-up. If you are unable to use de-mineralized or distilled water, we recommend you follow this procedure monthly.

- Turn the appliance off, and unplug the power cord.
- Remove the hose and pole from the appliance.
- Drain the water reservoir, and empty water from the Water Tank.
- Mix a solution of 50% vinegar and 50% water. In most cases, 2 cups of this solution will be sufficient.
- Slowly pour the water-vinegar solution into the hose connector.
- If standing the water-vinegar solution becomes visible in the water reservoir's inlet hole, continue to pour to solution into the hose connector until the water reservoir is about half-full, near the top of hose.
- Allow standing for 40 minutes.
- Drain the solution out of the water reservoir by removing the drain plug and allowing the liquid to drain into a sink or tub.
- Drain the solution out of the hose connector by tilting the appliance over a sink or tub and pouring the water out of the hose connector.
- Pour clean water in the hose connector and Water Reservoir inlet, and drain. Repeat this step until the vinegar odor dissipates.
- Reassemble the appliance and operate normally.

If this procedure does not work the appliance normal operation, the appliance may need servicing.

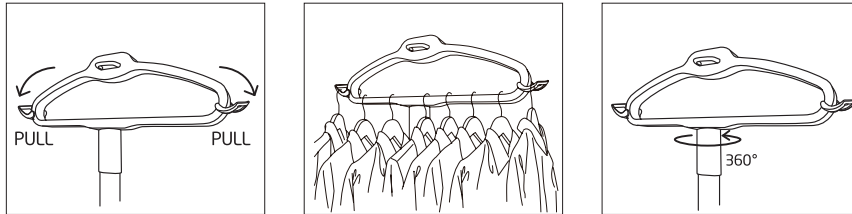
The garment steamer comes with a practical accessory, fabric brush, to attach this accessory to the steam nozzle:

- Turn off the steamer and wait until no steam emits from the steam nozzle.
- Assemble the flute of fabric brush towards the peg that at the bottom of steam nozzle.
- Push the Fabric Brush gently until it is firm in place.



Installation and usage of accessories

- 360° Swivel Hanger



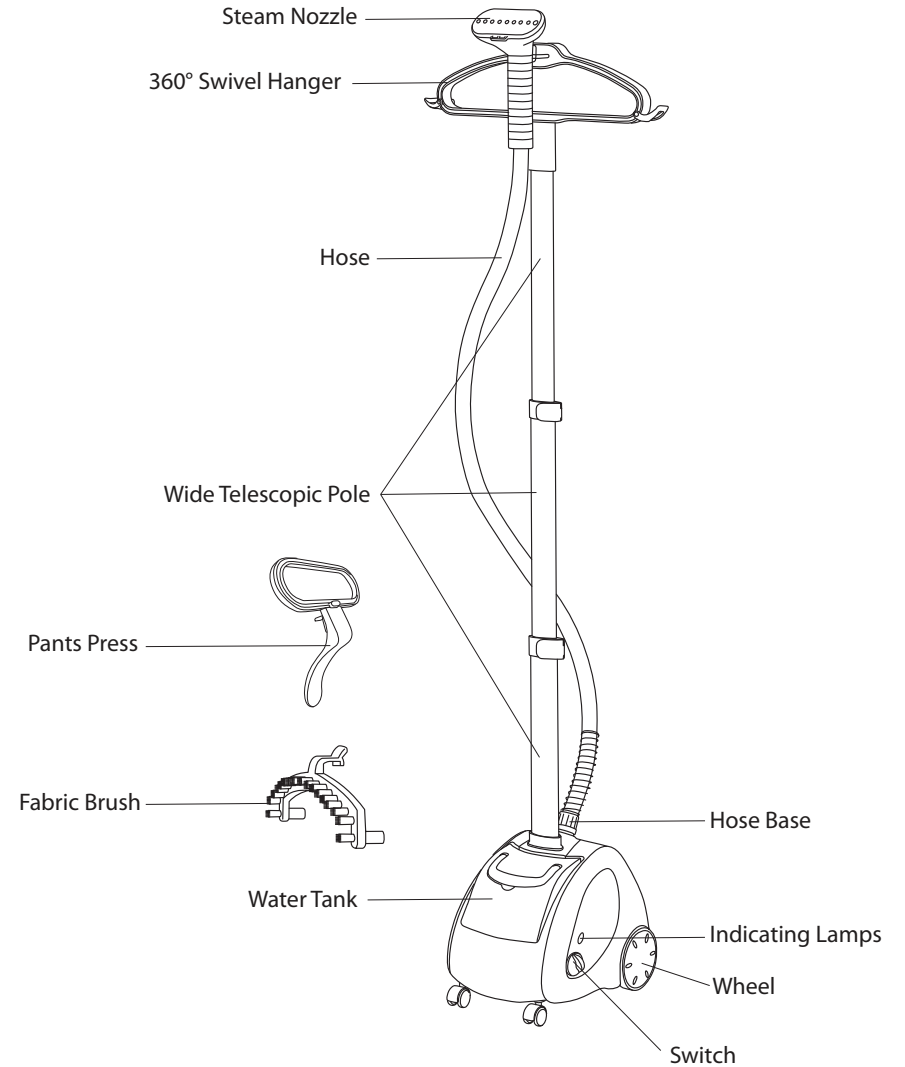
Note:

- Do not install the accessory while steam emitting from the Steam Nozzle to avoid burns.

PRODUCT TECHNICAL PARAMETERS

MODEL	RATED VOLTAGE	RATED POWER	TANK CAPACITY
MGS29	220-240V-50/60Hz	1260W - 1500W	1.8L

INTRODUCTION OF PARTS

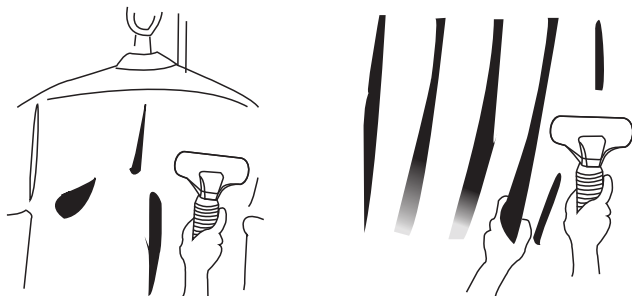


CONTROLS AND OPERATIONS

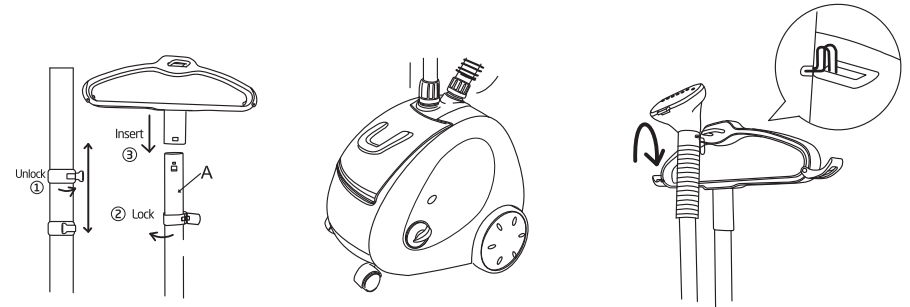
- Unplug the power cord, and turn the switch to the "OFF" position.
- Remove the water tank, turn it upside down, and unscrew the valve cap.
- Fill the water tank with cool water, and replace the valve cap. Do not use hot water.
- To prolong the lifetime of your steamer, we recommend using distilled or de-mineralized water.
- Place the water tank back into the appliance and make sure it is sitting properly and securely in the cavity. Do not jet the steamer operate with a dry water tank, or the damage to the appliance could occur.
- Plug the appliance into a properly outlet.
- Select and turn on the switch to the suitable steam flow level. Verify that the light on the switch is illuminated. Steam should start flowing from the nozzle in approximately 45 seconds. Please select the proper steam flow level according to the materials of your garments.
- When you are finishing with your steaming session place the switch in the "OFF" position remove the plug from the outlet.

Pressing with steam:

- To steam a garment, place it on a clean, rust-free clothes hanger and place the hanger on the clothes hanger hook.
- Grasp the Handle, and place the steam nozzle at the bottom of the garment. Steam will rise along the inside and outside of the fabric, removing wrinkles. Slowly slide the nozzle vertically, from the bottom to the top of the garment. Do not allow kinks to form in the hose at any time.
- Remove the nozzle from bottom to top on the garment, and smooth the fabric with your free hand.
- Repeat steps 2 and 3 as necessary until the fabric is wrinkled free.
- Curtains and draperies can be steamed while still hanging.
- Heavier fabrics may require repeated steaming.
- To remove stubborn wrinkles, the fabric brush may also be used.
- Be careful when handling garments on the clothes hanger hook. Pulling on the garment with too much force may cause the appliance to tip.



- Put the clothes hanger hook onto the top telescope pole (A) along the alignment as shown below
- Insert the bottom of the telescope pole into the pole base as shown below.
- Turn the pole base lock clockwise until tightened.
- Loosen the clips on the telescope pole.
- Pull the whole pole to its full extension and tighten the clips as shown below
- Put the Hose onto the threaded Hose Base by turning the fitting on the end of the hose clockwise. Hands tighten only. Do not over-tighten.
- Hang the Steam nozzle on the steam nozzle holder as shown below.



Note:

- Always hang the Steam Nozzle on the steam nozzle holder when not in use to prevent steam from causing bodily injury or damage to surfaces.
- The telescopic pole must be fully extended during steam operation to ensure smooth lining of the hose and provide a free flow of steam.
- Do not pull the hose with excessive force or damage will occur and causing steam leakage.
- Do not move the appliance by grasping the hose.