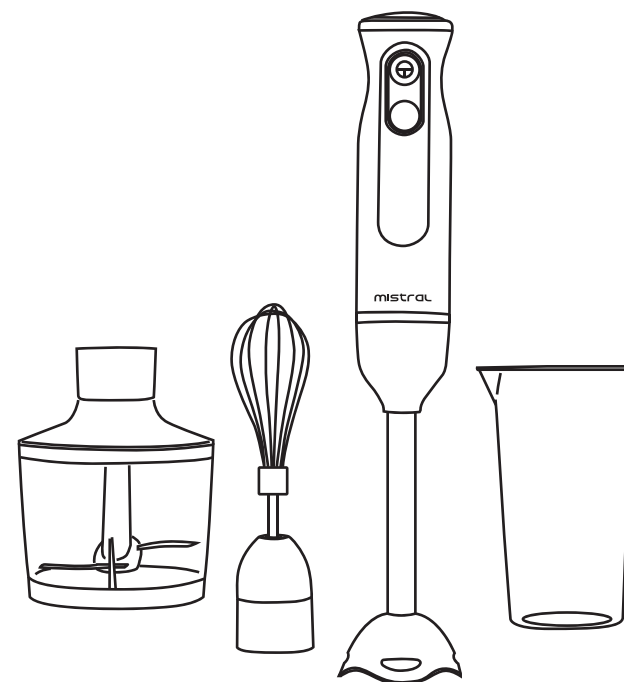


mistral

Multi-Functional Hand Blender MHB1902



Warranty & Customer Service

SCAN FOR



e-Warranty

e-Warranty Registration at <https://khindonline.com/login>

MAYER MALAYSIA SDN BHD

(Formerly known as Khind Alliances Sdn. Bhd.)

Customer Service Hotline: 1800-88-0032

Service Centre Operating Hours:

8.30am – 6.00pm (Monday - Friday)

Closed on Saturday, Sunday and Public Holidays

No. 2, Jalan Astaka U8/82, Bukit Jelutong, 40150 Shah Alam, Selangor D.E., Malaysia.

Waranti & Perkhidmatan Pelanggan

IMBAS UNTUK



E-Waranti

Pendaftaran e-Waranti di <https://khindonline.com/login>

MAYER MALAYSIA SDN BHD

(Sebelum ini dikenali sebagai Khind Alliances Sdn. Bhd)

Hotline Perkhidmatan Pelanggan: 1800-88-0032

Waktu Operasi Pusat Perkhidmatan:

8.30am – 6.00pm (Isnin-Jumaat)

Ditutup pada hari Sabtu, Ahad dan Cuti Umum

No. 2, Jalan Astaka U8/82, Bukit Jelutong, 40150 Shah Alam, Selangor D.E., Malaysia.

Please read this instruction manual thoroughly before operating and keep it for future reference

IMPORTANT SAFETY INSTRUCTIONS

- Read all instructions.
- This appliance is not intended for use by persons (including children) with reduced physical, sensory or mental capabilities, or lack of experience and knowledge, unless they have been given supervision or instruction concerning use of the appliance by a person responsible for their safety.
- Children should be supervised to ensure that they do not play with the appliance.
- Do not allow children to use the blender without supervision.
- This appliance should not be used by children, Keep the appliance and its cord out of reach of children.
- To protect against risk of electrical shock, do not put the appliance or cord in water or other liquid. If the appliance or cord falls into liquid, unplug the cord from outlet immediately.
- It is not recommended to use attachments sold with the appliance that are not for use with this model as it may cause fire, electric shock, or injury.
- Blades are sharp, please handle its with care.
- Do not use the appliance over a stove or with other heat source.
- Do not use outdoors.
- Do not let cord hang over edge of table or counter.
- Do not let cord contact hot surfaces, including the stove.
- Never twist the wire power cord during use
- Never handle the appliance if your hands are wet.
- Never pull the cord to disconnect from the socket, always remove by grasping the plug.
- Do not place appliance on or near a hot gas or electric burner, or in a heated oven.
- Unplug from outlet when not in use, before approaching, putting on or taking off parts, and before cleaning.
- Do not operate any appliance with a damaged cord or plug after the appliance malfunctions, or is dropped or damaged in any manner. Return appliance to the nearest authorized service facility for examination, repair, or mechanical or electrical adjustment.
- Connect the appliance only to an alternating current of the voltage specified on the rating plate & only to an earthed socket. To avoid circuit overload do not operate another high wattage appliance on the same circuit.
- Care shall be taken when handling the sharp cutting blades, emptying the bowl and during cleaning.
- Always disconnect the appliance from the supply if it is left unattended and before assembling, disassembling or cleaning.
- Switch off the appliance and disconnect from supply before changing accessories or approaching parts that move in use.

CLEANING AND MAINTENANCE

CLEANING

1. Unplug the appliance.
2. Clean the main body of the appliance with a damp cloth. Do not immerse the main body in any liquid.
3. Clean the blades and accessories immediately after using to avoid bacterial growth. Take care of the blades because they are too sharp.

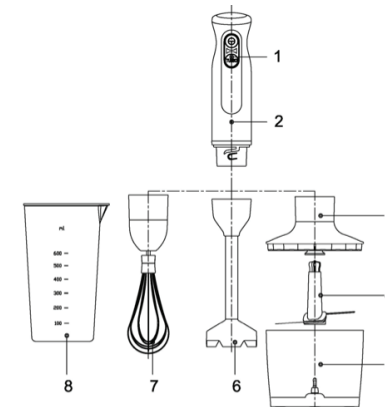
- If the supply cord is damaged, it must be replaced by the manufacturer, its service agent or similarly qualified persons in order to avoid a hazard.
- **WARNING!** Misuse of this appliance may cause injury.
- Be careful if hot liquid is poured into the blender as it can be ejected out of the appliance due to a sudden steaming.
- Do not use the appliance without any load in the measuring cup or chopper bowl.
- Do not overload the measuring cup or chopper bowl beyond its maximum capacity.
- Do not use the appliance together with accessories other than those which are provided by manufacturer.
- This appliance is intended for household use only. Do not use this appliance other than its intended use.
- Refer page 3 & 4 for the operating times and speed settings for accessories.
- Refer page 5 for cleaning & maintenance on how to clean surfaces in contact with food.

PRODUCT TECHNICAL PARAMETERS

MODEL	RATED VOLTAGE	RATED POWER	CHOPPER CAPACITY	MEASURING CUP
MHB1902	220-240V~ 50-60Hz	600W	500ml	600ml

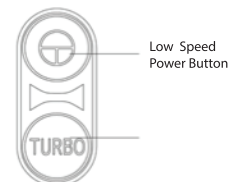
INTRODUCTION OF PARTS

1. Power Button
2. Main Body
3. Chopper Cover
4. Chopper Blade
5. Chopper Bowl
6. Blender Stick
7. Whisk
8. Measuring Cup



Power Button:

This button allows you to activate the hand blender at the touch a button. Simply press and hold down the Low or High button to blend or pulse. Once the button is released blending will stop.



CONTROLS AND OPERATIONS

ASSEMBLE THE APPLIANCE

BLENDING STICK

1. Attach main body onto blender stick. Hold main body upright and turn blender stick clockwise until assembly locks into place.
2. Plug the power cord of the hand blender into an electrical outlet.

WHISK ATTACHMENT

1. Attach main body onto whisk. Hold whisk upright and turn main body clockwise until assembly locks into place.
2. Plug the power cord of the whisk into an electrical outlet.

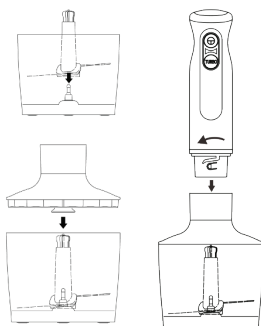
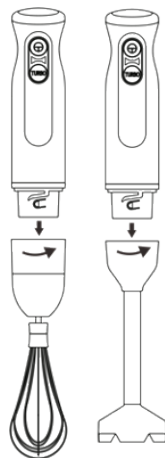
CHOPPER

1. Place the chopper blade into center of the chopper bowl over metal blade shaft.
2. Place the chopper cover on top of the chopping container and rotate counter-clockwise to lock into place.
3. Attach main body onto chopper cover. Hold chopper cover upright and turn motor unit clockwise until assembly locks into place.
4. Plug the power cord of the chopper into an electrical outlet.

OPERATING THE APPLIANCE

BLENDING

1. Twist the blender stick onto the main body at anti-clockwise until it is locked.
2. Plug in the appliance.
3. The measuring cup must be not more than 600mL full to prevent over flowing.
4. Always use the blender stick to blend ingredients together with water or other liquid.
5. Do not use the blender stick to blend hard foods, such as coffee bean, ice cubes, sugar, cereals, chocolate etc.
6. Two different speeds set allows different blending for various ingredients.
7. Do not operate the blender stick for more than 10 seconds at one time. Leave it for a few minutes to rest before next use.
8. When you take out the blender stick from the main body, make sure of it unplugged.
9. The blade is sharp, handle it with care to avoid any damage or injury.



WHISK

1. Turn the whisk onto the main body at anti-clockwise until it is locked.
2. Plug in the appliance.
3. Two different speeds set for mixing eggs (3 pcs) or creams etc. When operating, please take care of your long hair or scarves etc. hanging down over the rotating whisk to avoid any damage to you.
4. After using it, please do not press the switch to avoid any liquid ingredient splashed to make your clothes or table dirty.
5. Do not operate the whisk each time for more than 3 mins, otherwise the motor will be burnt in the long time.
6. Always unplug it after using or cleaning.

CHOPPER

1. Place chopper blade on the center pin of chopper bowl. Always place the chopper bowl on the anti-slip pad.
2. Fill in the food in chopper bowl, such as meat, cheese, onions, herbs, garlic, carrots almonds, prunes etc..
3. Put the chopper cover on the chopper bowl, and turn it at clockwise until locked.
4. Place the main body onto the chopper cover, and ensure that is in place.
5. Plug in the appliance.
6. Press the switch to operate the chopper. During the processing, hold the main body with one hand and the other on chopper bowl.
7. After use, unplug it and take out the main body from chopper cover, then remove the chopper bowl.
8. Carefully take out the blade. Handle the blade with care because it is sharp!
9. Remove the processed food from the chopper bowl.

CAUTION: Chopping time should not exceed more than 10 seconds each time, and the food quantity should be less than 150g.