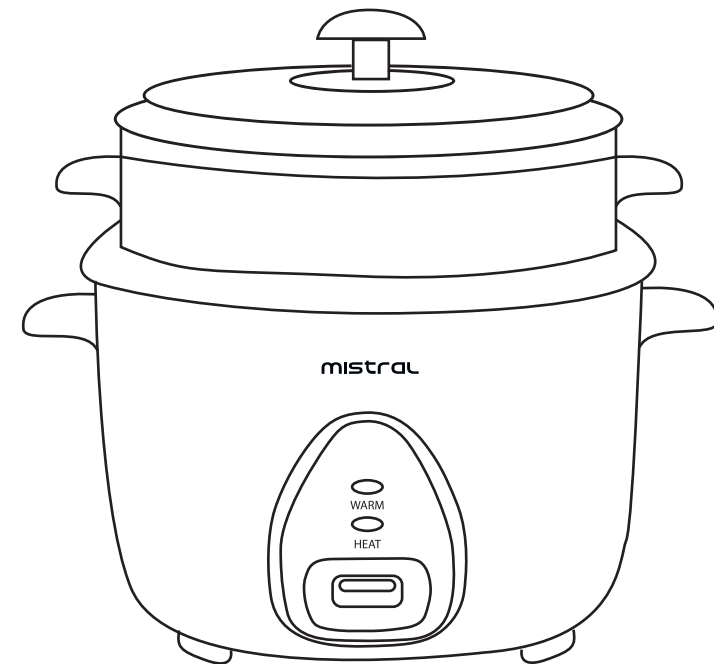


mistral

1.0L Rice Cooker MRC10S



Please read this instruction manual thoroughly before operating and keep it for future reference

Warranty & Customer Service

SCAN FOR



e-Warranty

e-Warranty Registration at www.khind.com.my/e-warranty.html

MAYER MALAYSIA SDN BHD

Customer Service Hotline: 1800-88-0032

Service Centre Operating Hours:

8.30am – 6.00pm (Monday - Friday)

Closed on Saturday, Sunday and Public Holidays

No. 2, Jalan Astaka U8/82, Bukit Jelutong, 40150 Shah Alam, Selangor D.E., Malaysia.

Waranti & Perkhidmatan Pelanggan

IMBAS UNTUK



E-Waranti

Pendaftaran e-Waranti di www.khind.com.my/e-warranty.html

MAYER MALAYSIA SDN BHD

Hotline Perkhidmatan Pelanggan: 1800-88-0032

Waktu Operasi Pusat Perkhidmatan:

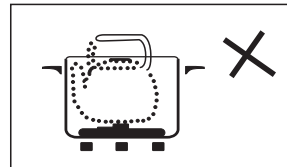
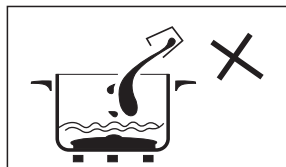
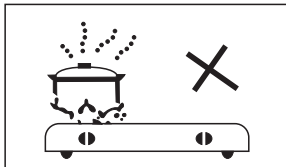
8.30am – 6.00pm (Isnin-Jumaat)

Ditutup pada hari Sabtu, Ahad dan Cuti Umum

No. 2, Jalan Astaka U8/82, Bukit Jelutong, 40150 Shah Alam, Selangor D.E., Malaysia.

IMPORTANT SAFETY INSTRUCTIONS

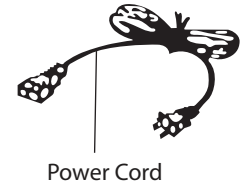
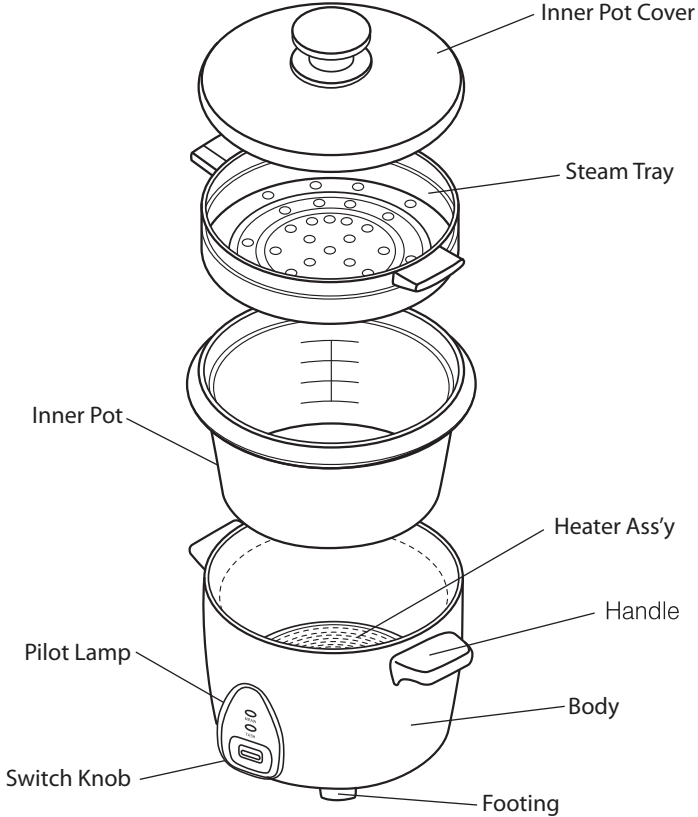
- This appliance is not intended for use by persons (including children) with reduced physical, sensory or mental capabilities, or lack of experience and knowledge unless they have been given supervision or instruction concerning the use of the appliance by a person responsible for their safety.
- Children should be supervised to ensure that they do not play with the appliance.
- Do not operate any appliance with a damaged cord or plug or after the appliance malfunctions, or has been dropped or damaged in any manner. If the power cord is damaged, it must be replaced by the manufacturer, its service agent, or similarly qualified persons to avoid a hazard.
- When using electrical appliances, basic safety precautions should always be followed to reduce the risk of fire, electric shock, and injury.
- Do not immerse appliance, cord or plug in water or other liquid.
- Unplug from the outlet when not in use and before cleaning.
- Do not unplug the appliance by pulling on the cord.
- Use the accessories from the appliance only, as other accessories not from the appliance may cause fire, electric shock or injury.
- Do not immerse the appliance to water In case of damaged power cord, ask authorized service person for repair.
- Do not use inner pot directly in open flame.
- Always unplug the appliances when not in use.
- Pull by the plug never pull on the cord.
- Avoid the heater plate from getting wet.
- Be sure the inner pot bottom is not dented or deformed.
- Deformed, inner pot bottom can affect the cooking efficiency.
- Do not place the cooking utensils inside the pot while cooking.
- Always let the appliance cool down before you clean or move it.
- Set the appliance on a stable surface and do not expose to water, high humidity or heat sources.



PRODUCT TECHNICAL PARAMETERS

MODEL	RATED VOLTAGE	RATED POWER	RICE CAPACITY	GROSS CAPACITY
MRC10S	220-240V~ 50-60Hz	350W	1L	1.0L

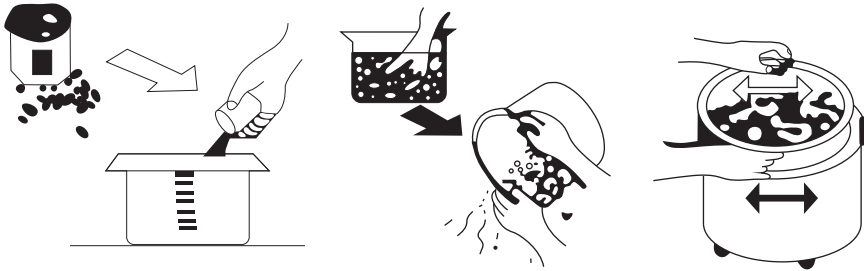
INTRODUCTION OF PARTS



CONTROLS AND OPERATIONS

Operation:

- Measure rice using cup provided with the appliance. Then pour on the inner pot.
- Wash the rice and adjust quantity of the water to desired amount proportion.
- Place the inner pot directly on the heater plate and wipe the outside surface of the inner pot with a soft dry cloth before putting it inside the body.
- Make sure the inner pot is properly placed on the heater plate by turning it slightly left and right.
- Press the switch knob and light the indicator will transfer to cook.
- The lamp will automatically turn "OFF" after the rice is cook finish.



For cooking rice:

Rice Type	Amount of rice (cups)	Amount of water (cups)
Brown Rice	1	1 ¼
	2	2 ¼
	3	3 ¼
	4	4 ¼
	5	5 ¼
	6	6 ¼
	7	7 ¼
	8	8 ¼

CLEANING AND MAINTENANCE

- Always unplug the appliance before cleaning and remove the inner pot from and use a cloth to clean the body.
- Do not use abrasive cleaners or steel wool.
- Clean the inner pot with detergent soap and wash completely with water. Dry the inner pot by using a cloth.
- Use a scouring pad in removing cooked rice from the heater plate.
- Clean with non-metal brush or sponge. Do not use steel wool or stell brush to remove cooked rice inside the appliance.
- Always keep inner pot cover and steaming plate clean and dry.
- Use clean and dry cloth to remove the dirt and stain.